

BIFC Blue G99

Bainbridge Island FC

Bainbridge, WA

G99 total strength=643

attack=0.75 defense=0.45

fall league = NPSL G14D3, NPSL Spr G14D2

alt names used:

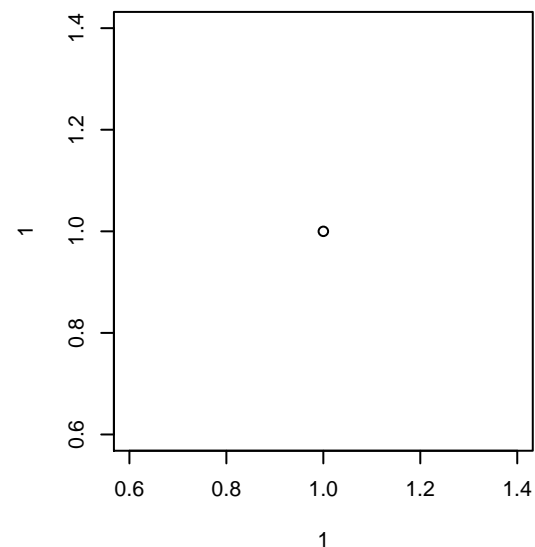
BIFC 99 Blue

Venues played:

Island Cup GU14 Silver

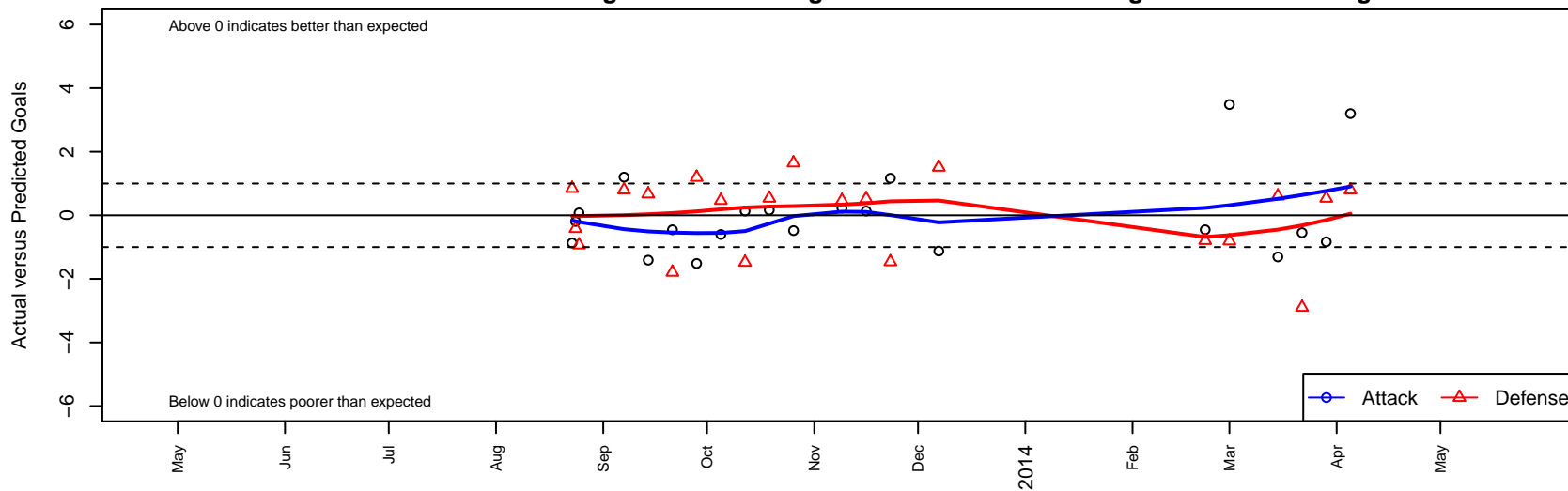
NPSL G14D3

NPSL Spr G14D2



BIFC Blue G99

Dots are actual minus expected GF (blue circles) and GA (red triangles).
Blue line is smoothed change in attack strength. Red is smoothed change in defense strength.



| | date | home | | away | | venue | pred.home | pred.away |
|-------|-------------|------------------------------------|---|-------------------------------|---|------------------------|------------------|------------------|
| 16581 | 2014-04-05 | BIFC Blue G99 | 6 | Mukilteo Rush G99 | 0 | NPSL Spr G14D2 | 2.80 | 0.80 |
| 16481 | 2014-03-29 | Whatcom FC Rangers Black G99 | 1 | BIFC Blue G99 | 0 | NPSL Spr G14D2 | 1.54 | 0.83 |
| 16398 | 2014-03-22 | Seattle United NE White G99 | 5 | BIFC Blue G99 | 0 | NPSL Spr G14D2 | 2.10 | 0.55 |
| 16308 | 2014-03-15 | BIFC Blue G99 | 0 | Firecrackers G99 | 1 | NPSL Spr G14D2 | 1.31 | 1.61 |
| 16086 | 2014-03-01 | Snohomish United Red G99 | 2 | BIFC Blue G99 | 5 | NPSL Spr G14D2 | 1.19 | 1.51 |
| 16010 | 2014-02-22 | BIFC Blue G99 | 0 | Granite Falls YSC G99 | 3 | NPSL Spr G14D2 | 0.46 | 2.21 |
| 15717 | 2013-12-07 | Seattle United Shoreline White G99 | 0 | BIFC Blue G99 | 0 | NPSL G14D3 | 1.51 | 1.13 |
| 15527 | 2013-11-23 | Whatcom FC Rangers Black G99 | 3 | BIFC Blue G99 | 2 | NPSL G14D3 | 1.54 | 0.83 |
| 15406 | 2013-11-16 | BIFC Blue G99 | 1 | SCORE Patriots G99 | 2 | NPSL G14D3 | 0.87 | 2.52 |
| 15255 | 2013-11-09 | BIFC Blue G99 | 2 | Storm King G99 | 0 | NPSL G14D3 | 1.78 | 0.46 |
| 14877 | 2013-10-26 | BIFC Blue G99 | 0 | Kent United White G99 | 1 | NPSL G14D3 | 0.48 | 2.65 |
| 14693 | 2013-10-19 | BIFC Blue G99 | 1 | Whatcom FC Rangers Black G99 | 1 | NPSL G14D3 | 0.83 | 1.54 |
| 14479 | 2013-10-12 | SCORE Patriots G99 | 4 | BIFC Blue G99 | 1 | NPSL G14D3 | 2.52 | 0.87 |
| 14276 | 2013-10-05 | MIFC Flames G99 | 1 | BIFC Blue G99 | 1 | NPSL G14D3 | 1.47 | 1.60 |
| 14048 | 2013-09-28 | BIFC Blue G99 | 0 | Snohomish United Red G99 | 0 | NPSL G14D3 | 1.51 | 1.19 |
| 13817 | 2013-09-21 | Granite Falls YSC G99 | 4 | BIFC Blue G99 | 0 | NPSL G14D3 | 2.21 | 0.46 |
| 13600 | 2013-09-14 | Seattle United NE Black G99 | 0 | BIFC Blue G99 | 0 | NPSL G14D3 | 0.67 | 1.41 |
| 13394 | 2013-09-07 | BIFC Blue G99 | 4 | Mukilteo Rush G99 | 0 | NPSL G14D3 | 2.80 | 0.80 |
| 13204 | 2013-08-25 | BIFC Blue G99 | 1 | Emerald City FC Green G99 | 3 | Island Cup GU14 Silver | 0.92 | 2.06 |
| 13173 | 2013-08-24 | BIFC Blue G99 | 0 | Crossfire OR LOSC Freedom G99 | 7 | Island Cup GU14 Silver | 0.19 | 6.58 |
| 13159 | 2013-08-23 | Westsound FC CK United G99 | 0 | BIFC Blue G99 | 0 | Island Cup GU14 Silver | 0.84 | 0.87 |